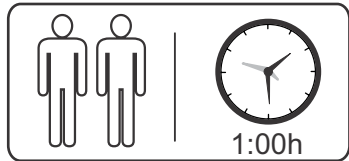
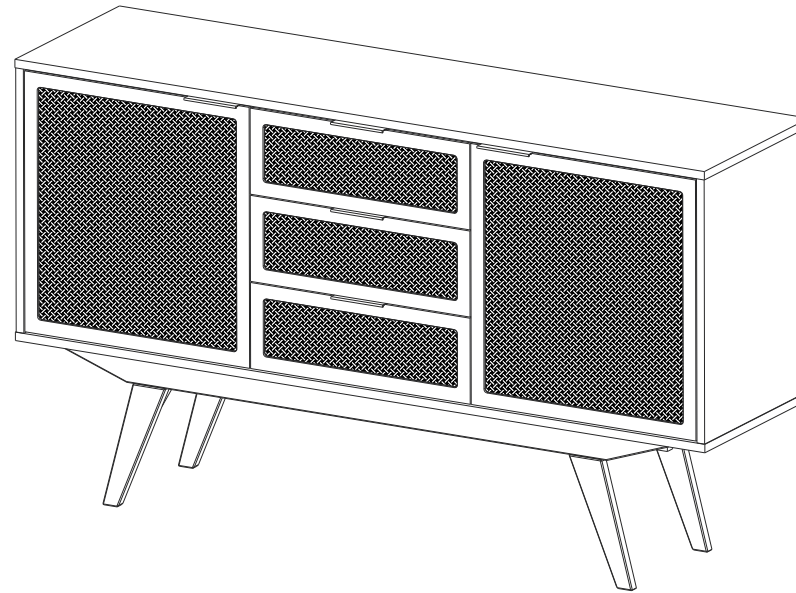


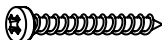







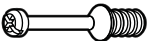



# Esquema de Montagem

## Balcão Alia Telinha 1350mm



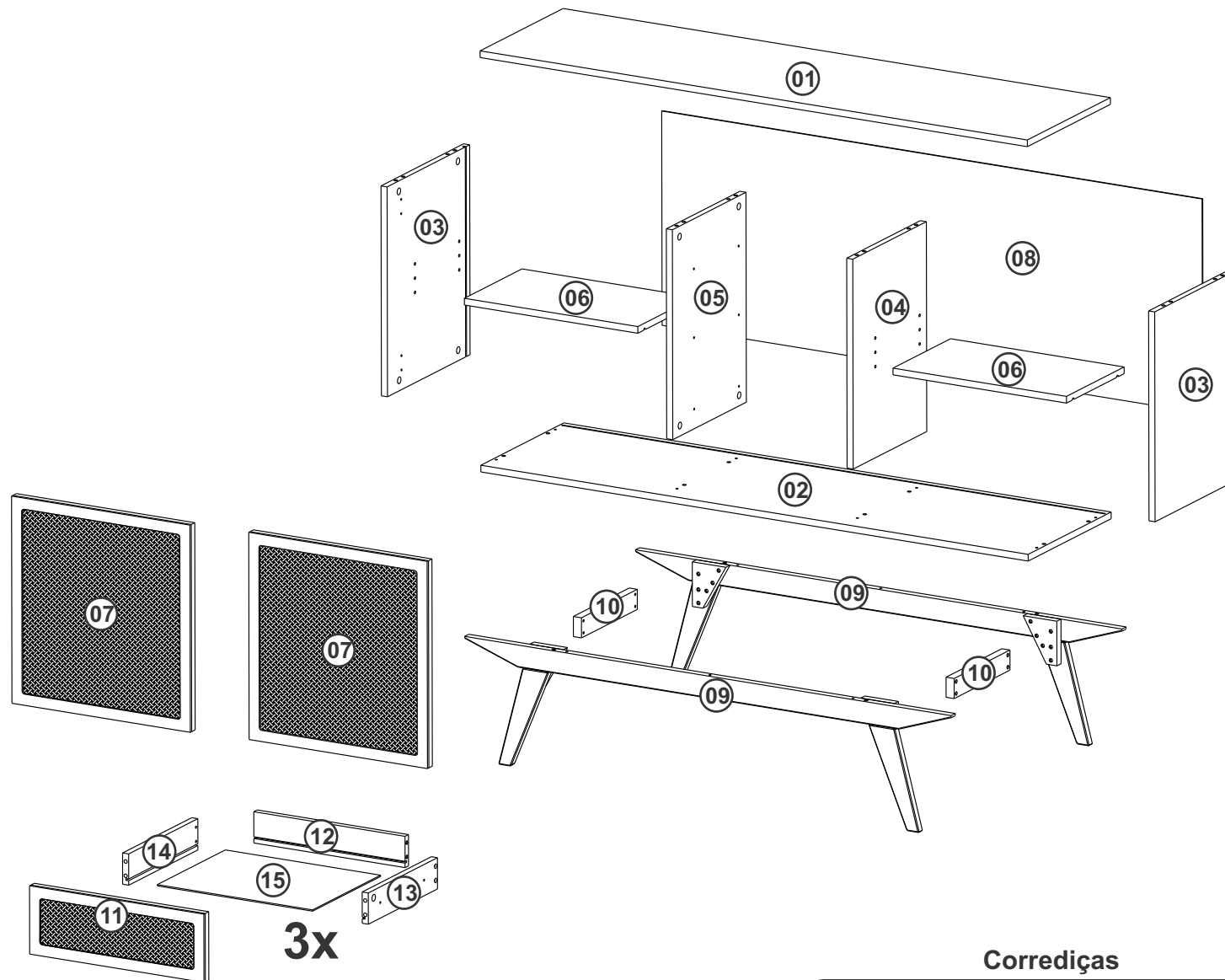
Peso Máximo Suportado

### Ferragens

<b>A</b>		Ø4,0 x 30	<b>14</b>	<b>G</b>		Corrediça 300mm	<b>03</b>
<b>B</b>		Ø4,0 x 40	<b>12</b>	<b>H</b>		Suporte Prateleira	<b>08</b>
<b>C</b>		Ø3,5 x 14	<b>60</b>	<b>I</b>		Dobradiça Super Curva	<b>04</b>
<b>D</b>		Cavilha Ø8 x 30	<b>26</b>	<b>J</b>		Feltro	<b>04</b>
<b>E</b>		Haste Minifix	<b>22</b>	<b>K</b>		Puxador	<b>05</b>
<b>F</b>		Tambor Minifix	<b>22</b>	<b>L</b>		Rv8	<b>10</b>

## Componentes

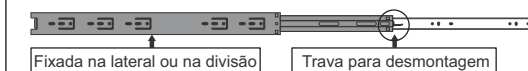
N.	Componentes	Quant.
01	Tampo	01
02	Fundo	01
03	Lateral Dir/Esq	02
04	Div Dir	01
05	Div Esq	01
06	Prateleira	02
07	Porta	02
08	Traseiro	01
09	Estrutura do Pé	02
10	Travessa do Pé	02
11	Frente Gav	03
12	Traseiro Gav	03
13	Lat Gav Dir	03
14	Lat Gav Esq	03
15	Fundo Gav	03



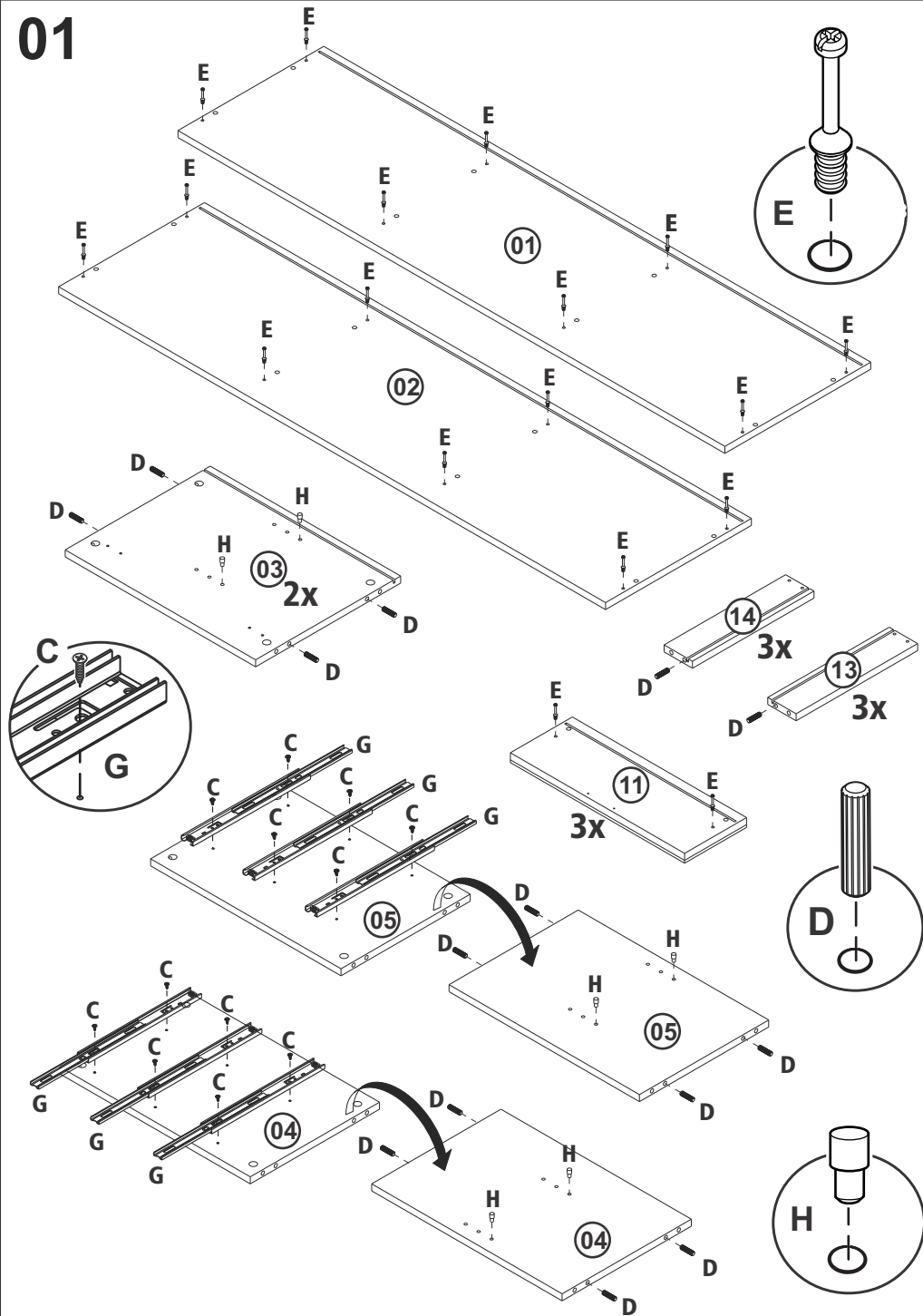
**Forrar o chão com o papelão das embalagens para efetuar a montagem**

### Corrediças

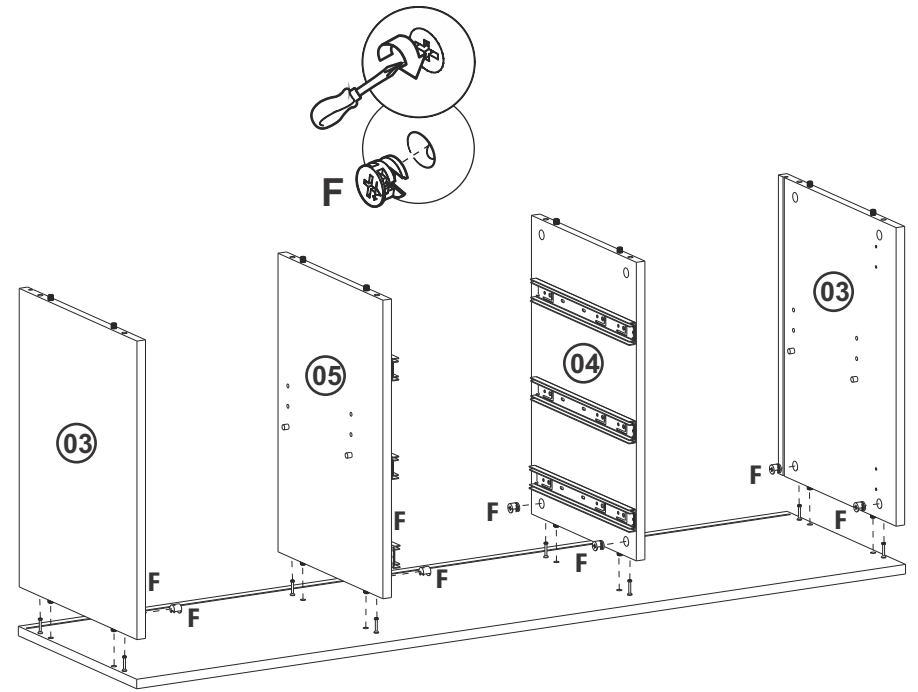
Destrave a corrediça e retire a parte que será fixada na lateral ou na divisão (com cor mais escura). A parte mais clara será colocada na gaveta e ilustrada na montagem das gavetas.



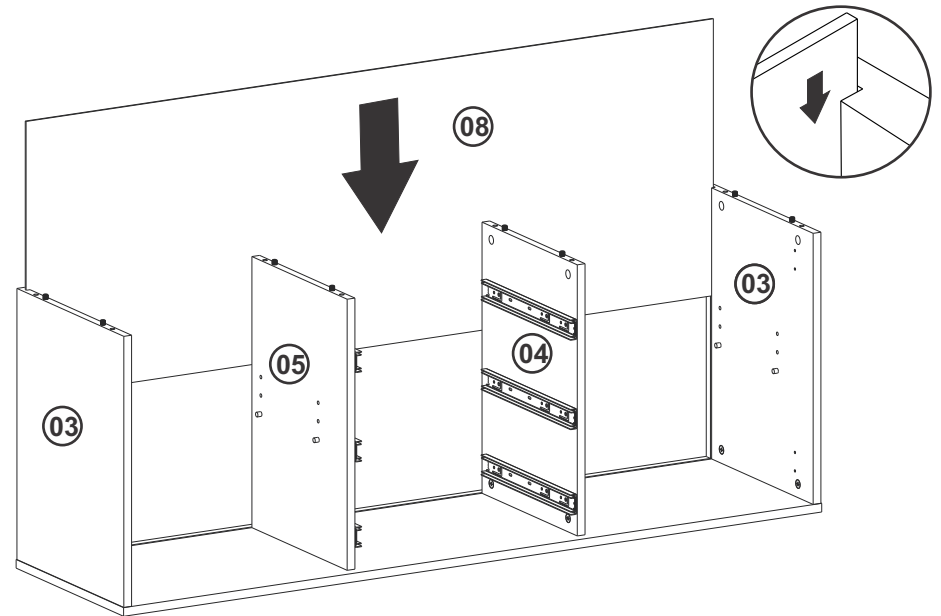
01



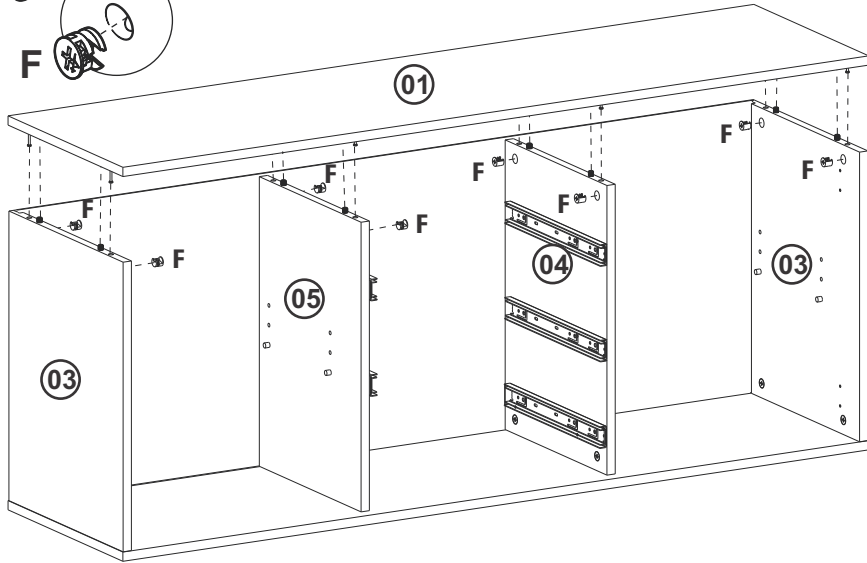
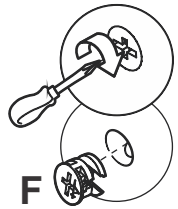
02



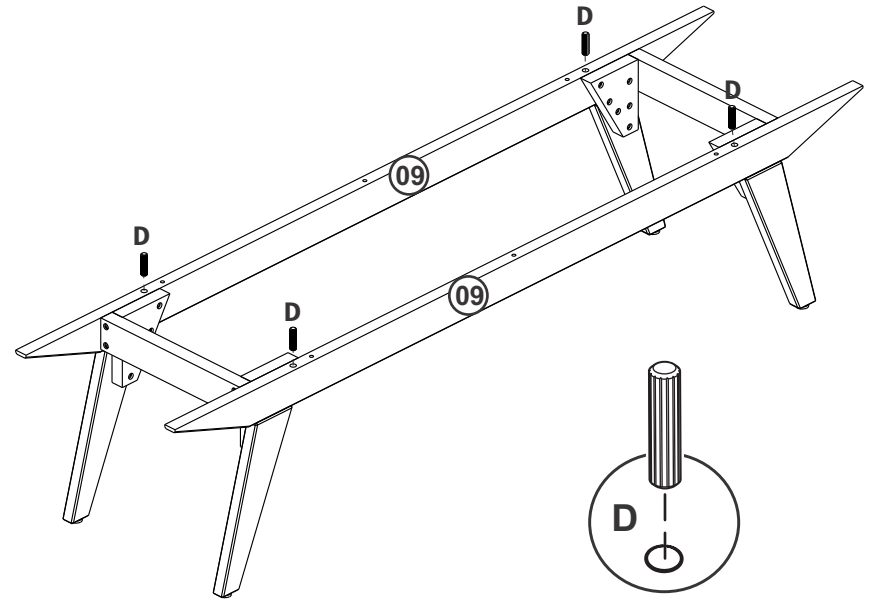
03



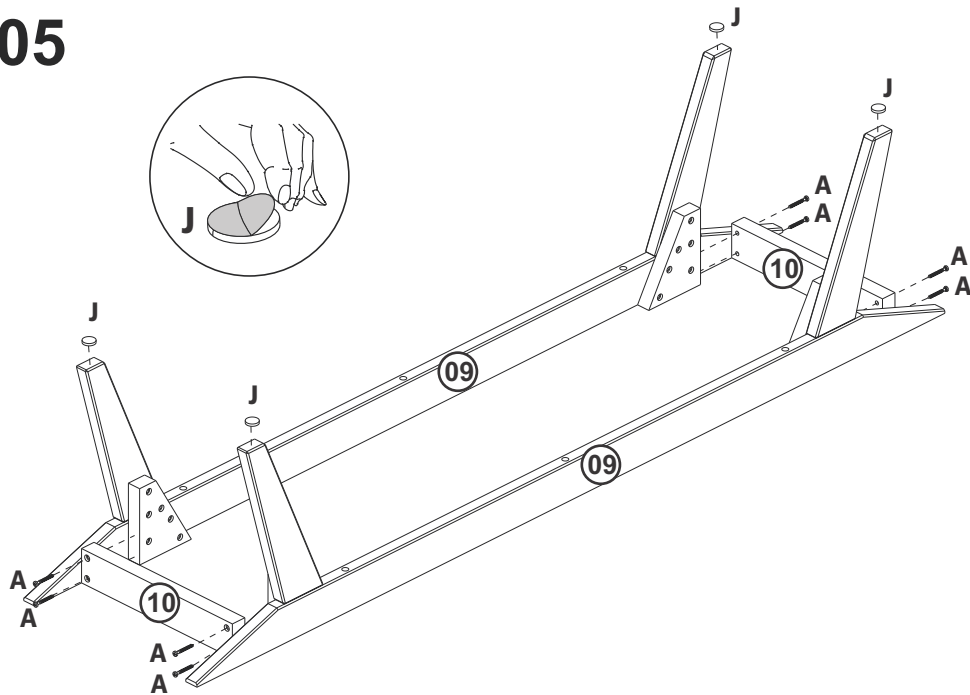
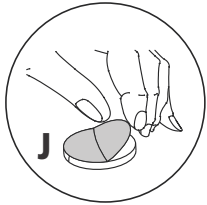
04



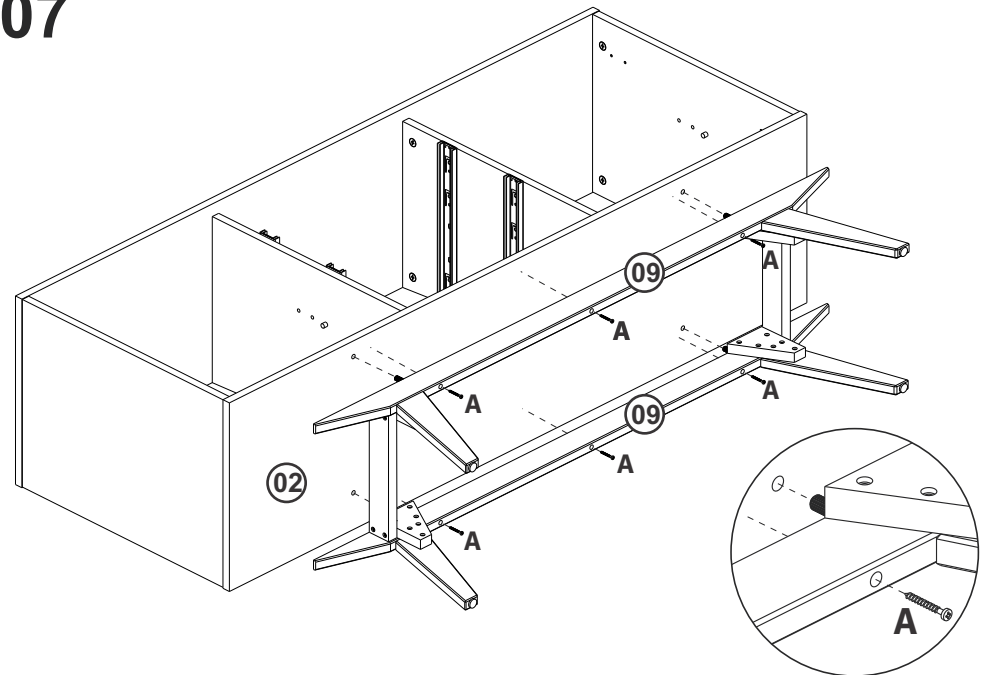
06



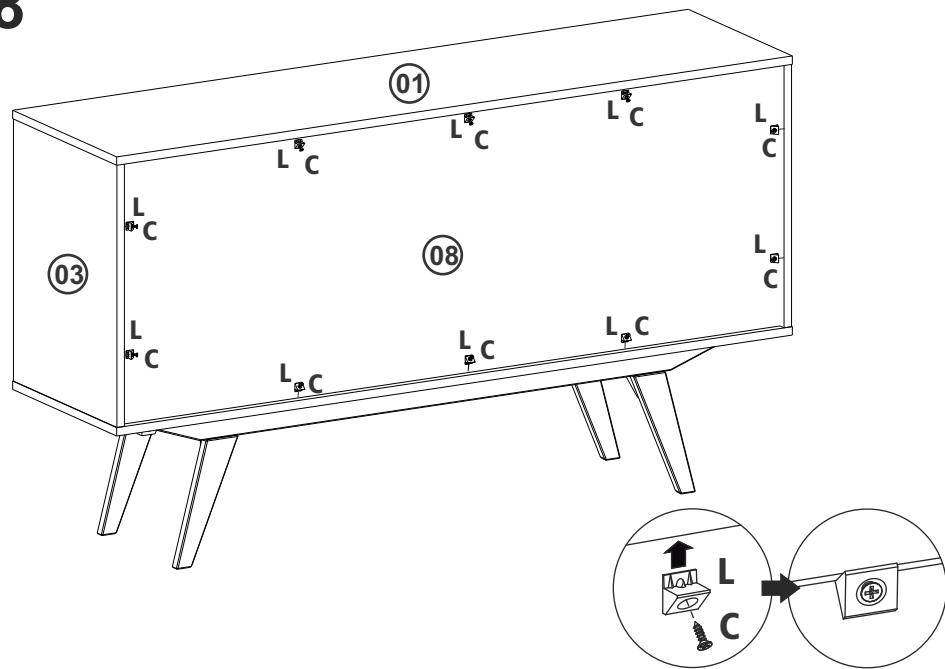
05



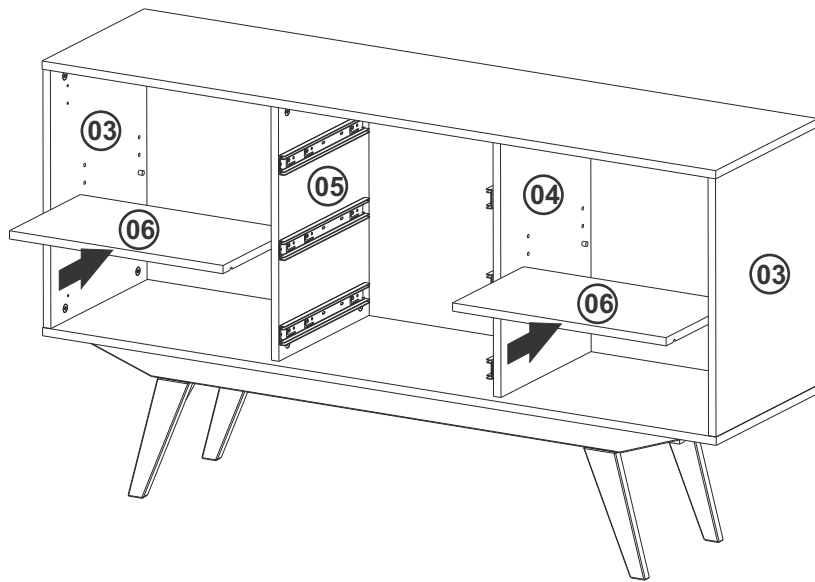
07



# 08

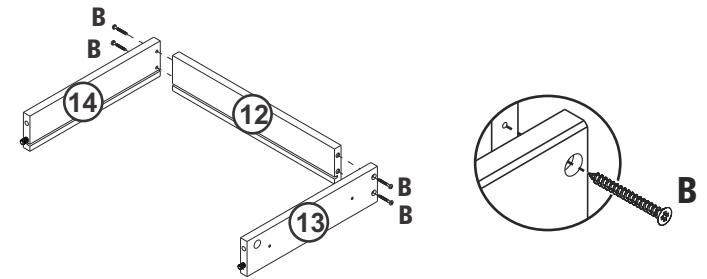


# 09

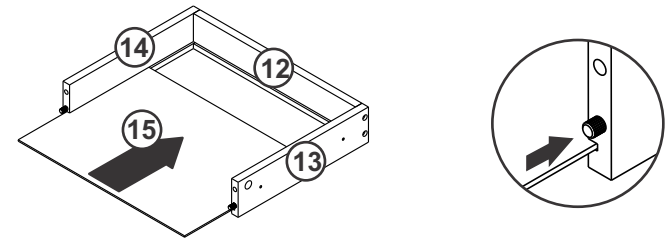


# 10 x3

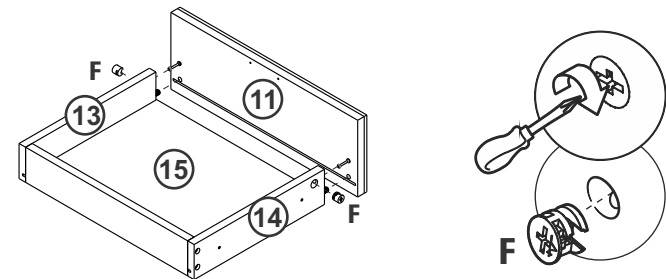
1°



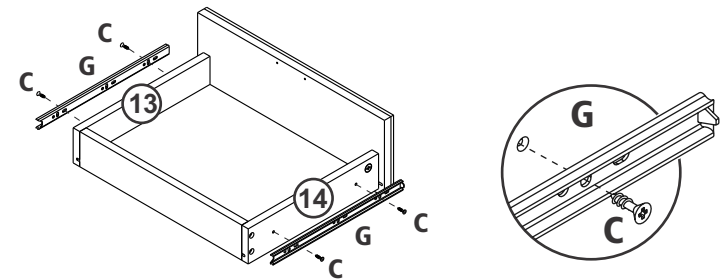
2°



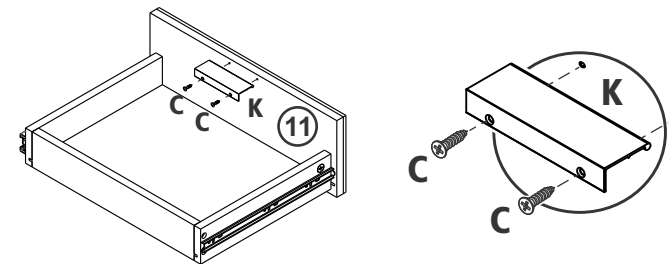
3°



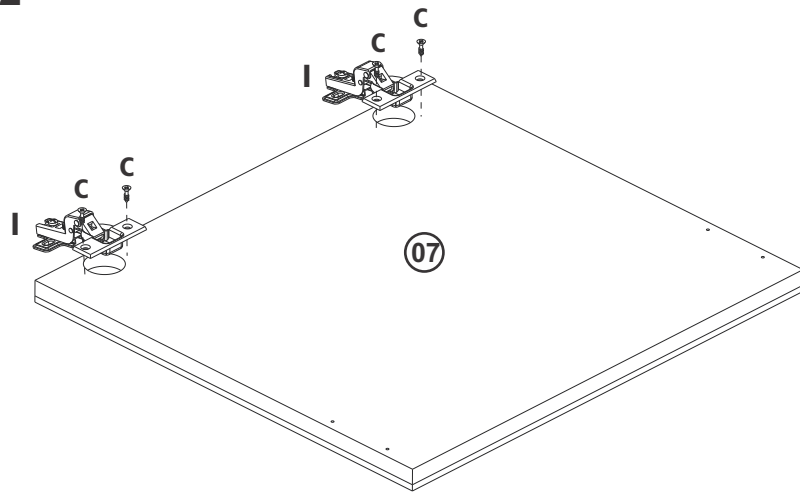
4°



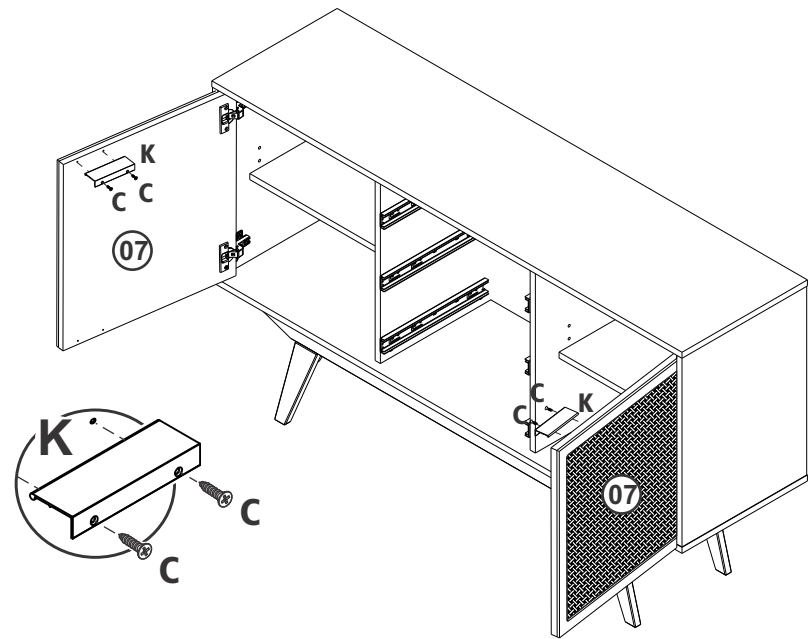
5°



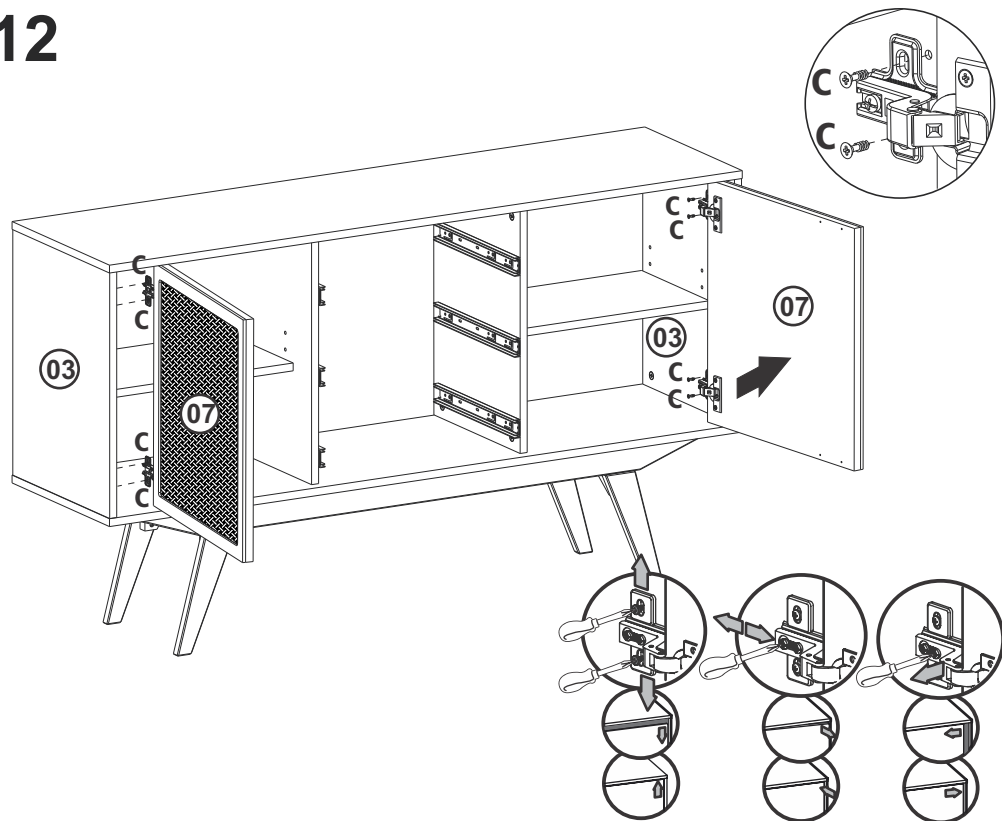
11 x2



13



12



14

